



7V—BAKER 2 QT.—3.00



7W—BAKER 3 QT.—4.00



7U—BAKER 10 OZ.—1.50



7HS—SALT & PEPPER—1.50



7PS—9" TRAY—1.25



7T—6 CUP TEA POT—2.50



7FL—PLATE 10"—1.80
7F—9" PLATE—1.50
7G—PLATE 7"—1.00
7E—5" SAUCER—.75



7B—SUGAR WITH LID—1.50



7A—6 OZ. CREAMER—1.00



7C—5 OZ. CUP—.75



7CL—MUG 8 OZ.—1.00



7M—MUG 14 OZ.—1.20



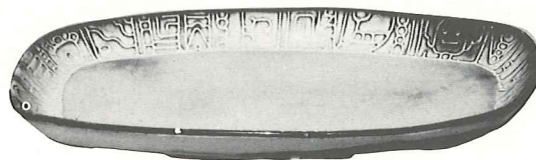
7XO—FRUIT 8 OZ.—.80



7X—CHILI-SOUP 14 OZ.—1.00



7XL—SALAD 20 OZ.—1.25



7QS—13" STEAK PLATTER (SHALLOW PLATTER)—2.00



7Q—13" DEEP PLATTER—2.50



7FC—15" CHOP PLATE—7.00



7N—1 QT. VEGETABLE BOWL—1.50



7P—17" DEEP PLATTER—5.00



7J—TEAPOT 2 CUP—1.50

THIS PAGE AVAILABLE IN PRAIRIE GREEN, DESERT GOLD, WHITE SAND.

SIZES ARE APPROXIMATE AND MAY VARY SLIGHTLY.